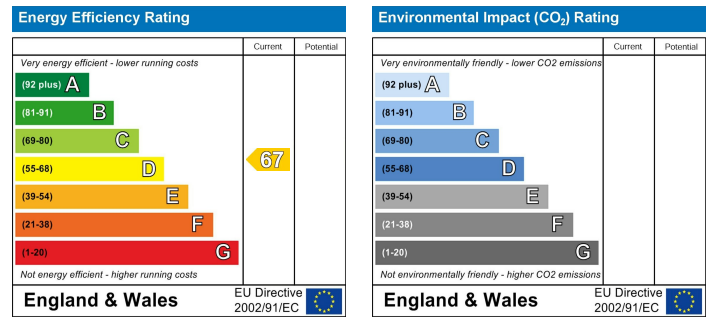


Location

Location Map



EPC Graph



Important Note

Centro Residential Sales and Lettings limited have not tested any services, heating system, electrical system, appliances, fixtures and fittings, that may be included in this property and would advise interested parties to satisfy themselves as to their condition or investigating the presence of any deleterious materials.

Viewing: Strictly by appointment through:

CENTRO RESIDENTIAL SALES AND LETTINGS LIMITED

Tel: 020 8401 5000

E-mail: residential@centro.plc.uk

See a selection of our properties at www.centro.plc.uk

£2,750 Per Month - 2nd March 2026

Gander Green Lane, Sutton, SM1 2EY



Description

- Mid Terrace Home
- Three Bedrooms
- Two Bathrooms
- Open Plan Kitchen/Lounge
- Off-Street Parking
- Great Location
- Ultra Modern
- Furnished
- EPC Rating D
- Council Tax Band D

Features

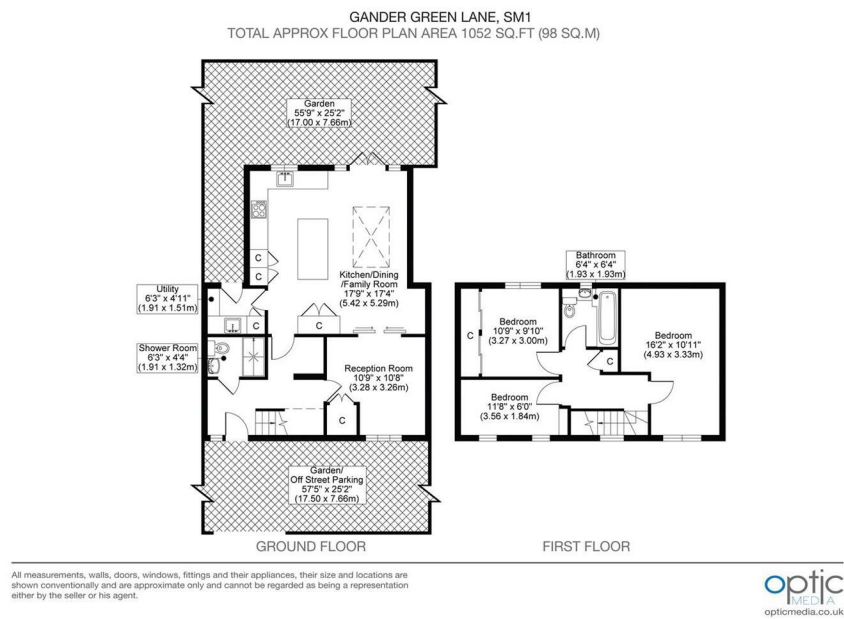
- Gas Central Heating
- Double Glazing
- Neutral Decor

What you need to know

- Term: 12 months
- Rent: £2750pcm exclusive of bills
- Security deposit: £3173.00
- Council Tax Band D
- Energy Rating: D



Floor Plan



For illustration purposes only



All dimensions and measurements are approximate and for guidance only.

Just Centro's Opinion...

On Gander Green Lane in Sutton, this beautifully finished mid-terrace home offers a delightful blend of comfort and modern living. The property features three well-appointed bedrooms and a stylish bathroom, making it an ideal choice for families or professionals seeking a spacious home.

Boasting a lovely open-plan kitchen and lounge area, perfect for entertaining. Off the kitchen, there is a practical utility room for added convenience. The ground floor also includes an additional reception room, which could be used as a home office, small TV room, or hobby space, along with a convenient downstairs shower room. The lounge and dining area connect seamlessly to a paved and grassed garden, ideal for outdoor enjoyment.

Upstairs, you will find a generously sized master bedroom, complemented by a second double bedroom, both with built-in wardrobes for ample storage. A large single bedroom completes the upper level, alongside a family bathroom that caters to all your needs.

For those with vehicles, the property offers off-street parking. Offered furnished and available from March, this home is ready for you to move in and make it your own.

Additional Photos

